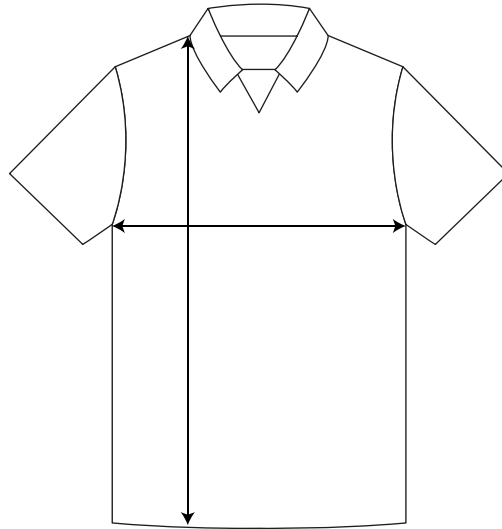


Football Shirts

*

Take all measurements from the outside, with the garment laying flat

Measuring guide



1/2 Chest
Measure this from armpit to armpit

Length
Measure from HSP to the bottom hem

	CM	CM	INCHES	INCHES
Size	1/2 Chest	Length	1/2 Chest	Length
XS	48	72	18.9	28.3
S	52	74	20.5	29.1
M	56	76	22	29.9
L	60	78	23.6	30.7
XL	64	80	25.2	31.5
XXL	68	82	26.8	32.3